

TASL

TASTRAK

TASL

TASTRAK

Always on the right track with TASL

## TASLIMAGE

### Neutron dosimetry system

A complete system for etching, scanning and analysing TASTRAK plastic nuclear detectors



Track Analysis Systems Ltd.  
Napier House  
Meadow Grove  
Bristol BS11 9PJ  
UK

Contact names:  
Gary Moss  
Peter Fewes  
Denis Henshaw

Tel: +44 (0)117 938 1172  
Fax: +44 (0)117 372 0667  
[www.tasl.co.uk](http://www.tasl.co.uk)  
e-mail: [info@tasl.co.uk](mailto:info@tasl.co.uk)

Track Analysis Systems Ltd. specialist in etchable plastic and laboratory systems for radiation research and dosimetry.

## We offer the following products and services:

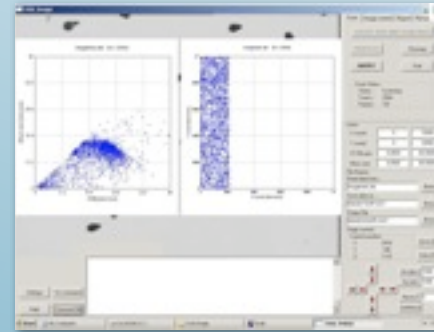
The **TASLIMAGE** system for analysing **TASTRAK** plastic is designed for easy to use of operation, for both routine neutron and radon dosimetry and the more flexible requirements for research using etched particle tracks.

### The complete measurement system comprises:

- Fully automated high specification **image analysis readout system** with high throughput and unparalleled accuracy and low background
- The system can read both our own proprietary format of detectors, and also the "**Autoscan**" style of detectors, including automatic ID reading
- Microscope with high quality **Nikon** optics and ultra-fast 3-axis motorised control
- High-sensitivity, low-background **TASTRAK PADC** plastic elements, cut and scribed to customer requirements
- Stainless steel etch/scan holders with transfer between etching and scanning without the need to remount the detectors
- Full etch processing facilities
- All necessary software and work instructions
- Full operator training available



The unique feature of the system is our **TASLIMAGE** software, developed by **TASL**. The software scans the plastic at a higher magnification than many other etched track readers, providing a better quality of track image for processing and better discrimination between tracks and background features.



The key features of **TASLIMAGE** are:

- Fully automatic scanning of dot-codes and etched tracks
- Fully automatic focus by software
- Highly sophisticated image analysis techniques to discriminate between etched tracks and background features
- Automatic background assessment of each detector
- A complete detector readout takes between 30 and 60 seconds depending on user selectable options
- The scan data is automatically converted to dose, and the results are displaying immediately in the record keeping database provided as part of the **TASLIMAGE** software. The data can also be exported to other programs such as Excel